

HINTS: A SPAN IS THE DISTANCE FROM SUPPORT TO SUPPORT. THE DISTANCE FROM SUPPORT TO THE END OF THE MEMBER IS NOT A SPAN. INDICATE THE BEARING POINTS (I.e., SIDE A, SIDE B, BEARING AT C, BEARING AT D), AND UNITS.

___ / 70

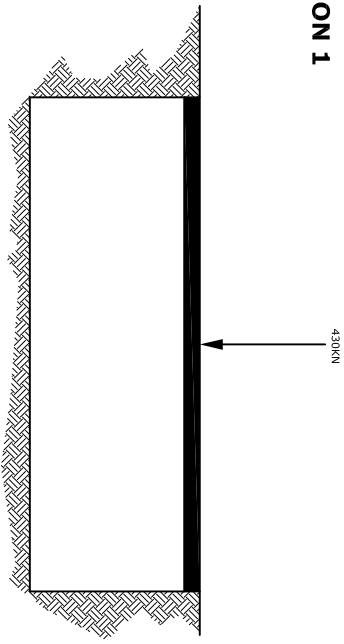
STATICS PROBLEMS #1

DETERMINE THE LOAD DISTRIBUTION ON THE STRUCTURAL MEMBERS BELOW

NAME: _____

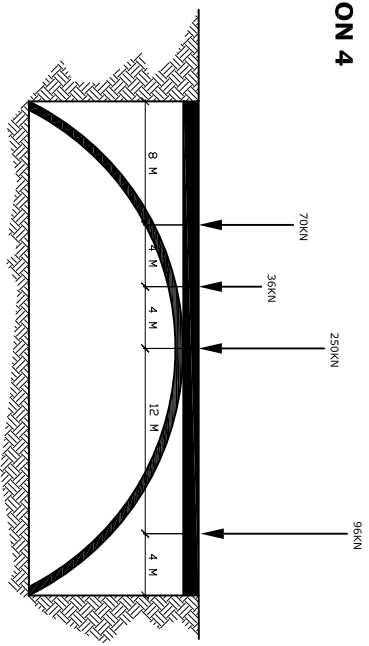
QUESTION 1

(4 MARKS)



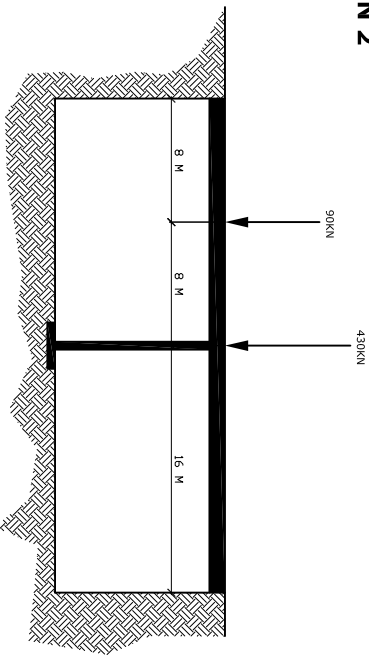
QUESTION 4

(18 MARKS)



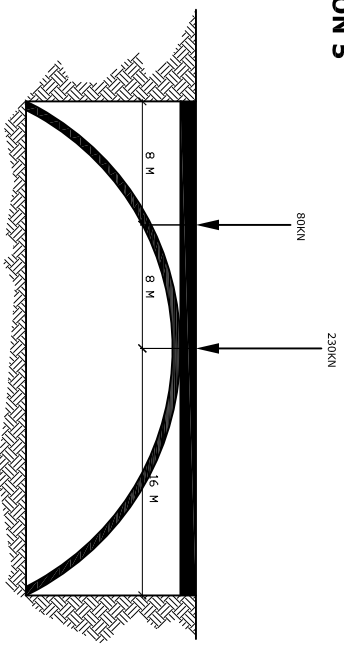
QUESTION 2

(8 MARKS)



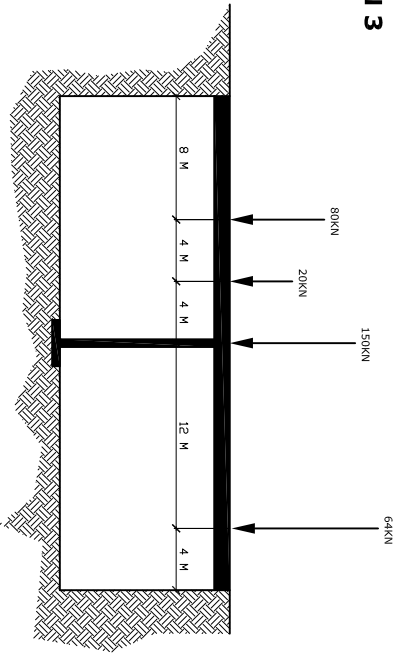
QUESTION 5

(12 MARKS)



QUESTION 3

(12 MARKS)



QUESTION 6

(16 MARKS)

